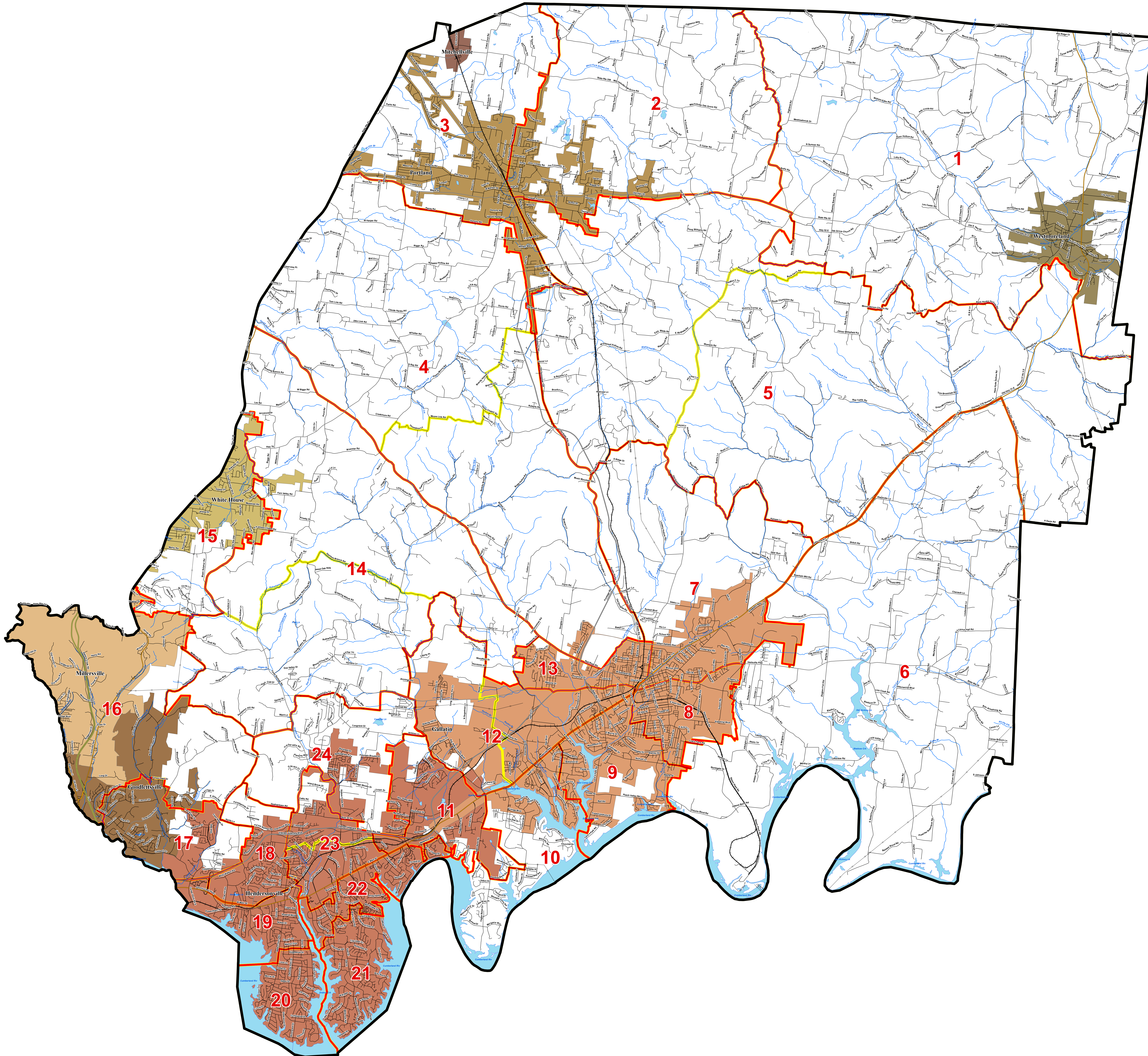


Current County Commission Districts and Voting Precincts

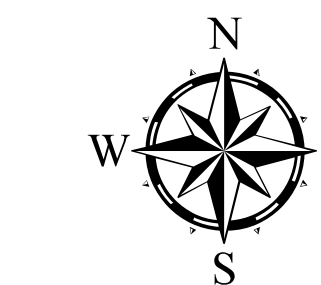


- Interstates
- U.S. Highway
- State Highway
- Local Roads
- Railroads
- Creeks / Stream
- Powerline

- County Commission Districts
- Voting Precinct
- Lakes / Rivers

- City, Town**
- Gallatin
 - Goodlettsville
 - Hendersonville
 - Millersville
 - Mitchellville
 - Portland
 - Westmoreland
 - White House

- County Commission District Number
- Precinct ID Number



2020 Total Population 196,281

2020 Population by District
Overall Range [4.6- (-4.8)] = 9.4%
Optimum Population is 8,178 per District

DISTRICT	PRECINCTS	TOTAL POP	% DIFF	% WHITE	% BLACK	% OTHER	% HISPANIC
1	1	10,000	21.2%	85.0%	10.0%	5.0%	0.0%
2	2	8,500	-14.3%	78.0%	12.0%	10.0%	0.0%
3	3	12,000	51.0%	82.0%	8.0%	10.0%	0.0%
4	4	9,500	14.3%	75.0%	15.0%	10.0%	0.0%
5	5	11,000	26.0%	80.0%	10.0%	10.0%	0.0%
6	6	7,000	-15.7%	70.0%	18.0%	12.0%	0.0%
7	7	10,500	28.0%	83.0%	9.0%	8.0%	0.0%
8	8	9,000	9.0%	77.0%	13.0%	10.0%	0.0%
9	9	11,500	29.0%	81.0%	11.0%	7.0%	0.0%
10	10	8,000	-11.4%	72.0%	16.0%	12.0%	0.0%
11	11	10,000	21.2%	84.0%	10.0%	6.0%	0.0%
12	12	9,000	9.0%	76.0%	14.0%	10.0%	0.0%
13	13	11,000	26.0%	82.0%	11.0%	7.0%	0.0%
14	14	7,500	-16.1%	68.0%	19.0%	13.0%	0.0%
15	15	10,500	28.0%	83.0%	9.0%	8.0%	0.0%
16	16	8,500	-14.3%	74.0%	17.0%	10.0%	0.0%
17	17	11,500	29.0%	81.0%	11.0%	7.0%	0.0%
18	18	9,500	14.3%	75.0%	15.0%	10.0%	0.0%
19	19	10,500	28.0%	83.0%	9.0%	8.0%	0.0%
20	20	8,000	-11.4%	72.0%	16.0%	12.0%	0.0%
21	21	10,000	21.2%	84.0%	10.0%	6.0%	0.0%
22	22	9,000	9.0%	76.0%	14.0%	10.0%	0.0%
23	23	11,000	26.0%	82.0%	11.0%	7.0%	0.0%
24	24	7,500	-16.1%	68.0%	19.0%	13.0%	0.0%

2020 Population by Precinct

VOTING PRECINCT	TOTAL POP	TOTAL POP %
10101	7,200	3.7%
10102	8,500	4.3%
10103	9,800	5.0%
10104	11,100	5.6%
10105	12,400	6.3%
10106	13,700	6.9%
10107	15,000	7.6%
10108	16,300	8.3%
10109	17,600	8.9%
10110	18,900	9.6%
10111	20,200	10.3%
10112	21,500	10.9%
10113	22,800	11.6%
10114	24,100	12.3%
10115	25,400	12.9%
10116	26,700	13.6%
10117	28,000	14.3%
10118	29,300	14.9%
10119	30,600	15.6%
10120	31,900	16.3%
10121	33,200	16.9%
10122	34,500	17.6%
10123	35,800	18.2%
10124	37,100	18.9%
10125	38,400	19.6%
10126	39,700	20.2%
10127	41,000	20.9%
10128	42,300	21.5%
10129	43,600	22.2%
10130	44,900	22.9%
10131	46,200	23.5%
10132	47,500	24.2%
10133	48,800	24.9%
10134	50,100	25.5%
10135	51,400	26.2%
10136	52,700	26.9%
10137	54,000	27.5%
10138	55,300	28.2%
10139	56,600	28.9%
10140	57,900	29.5%
10141	59,200	30.2%
10142	60,500	30.8%
10143	61,800	31.5%
10144	63,100	32.1%
10145	64,400	32.8%
10146	65,700	33.5%
10147	67,000	34.1%
10148	68,300	34.8%
10149	69,600	35.5%
10150	70,900	36.1%



Cordell Hull Building
425 Rep. John Lewis Way N | Nashville, Tennessee 37243-1402
P: 615.401.7773 | F: 615.532.5279

This map is provided as a public service and is for informational purposes only. It is not an endorsement or approval by the Comptroller of the Treasury of any district boundaries or county lines contained herein.

Precincts may change after the publication of this map. Contact the Division of Property Assessments at 615.401.7773 or visit apps.cotn.gov/dpamaps/redistrict/counties for current information.