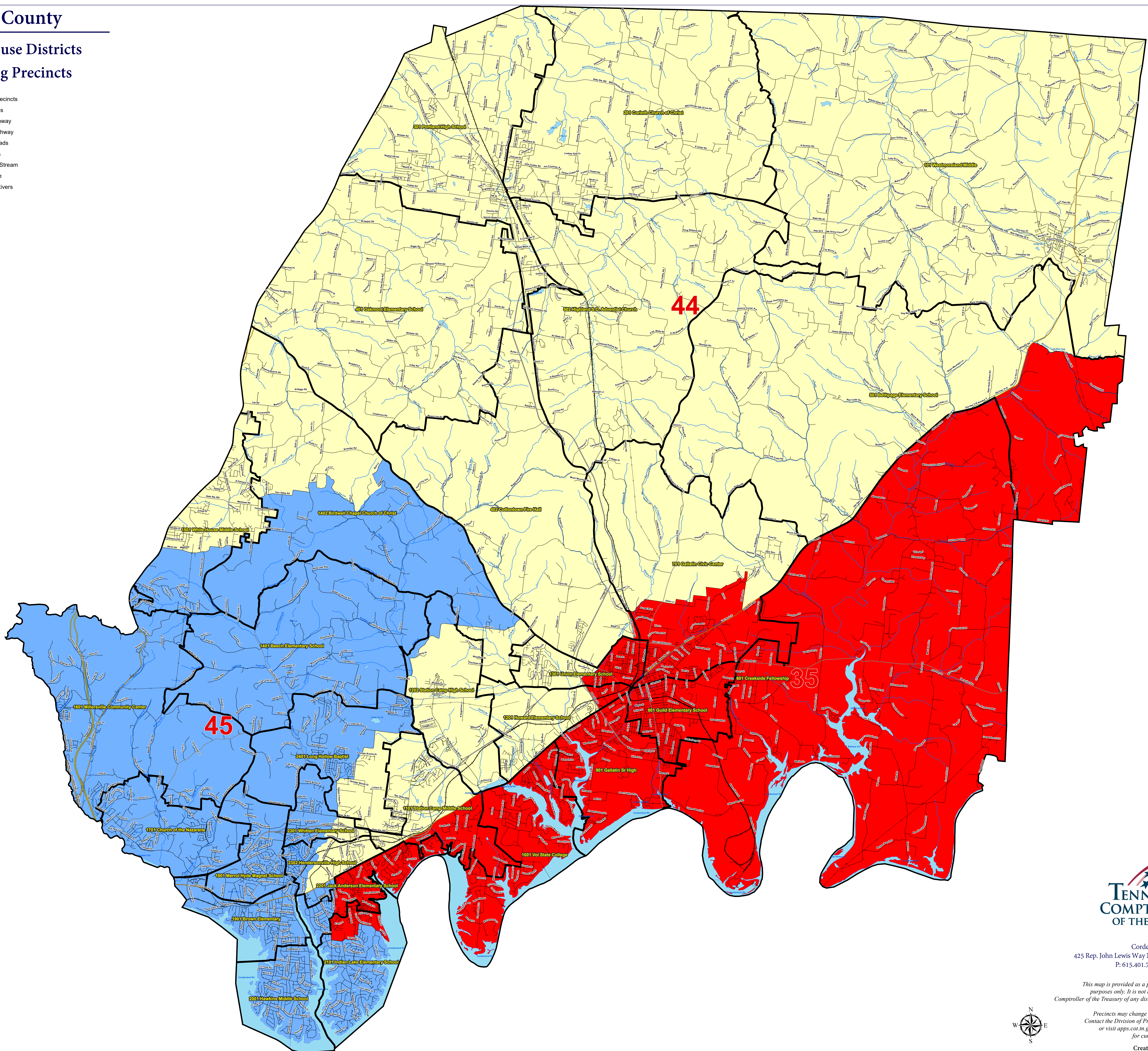


# Sumner County

## Current House Districts and Voting Precincts

- Voting Precincts
- Interstates
- U.S. Highway
- State Highway
- Local Roads
- Railroads
- Creeks / Stream
- Powerline
- Lakes / Rivers



Cordell Hull Building  
425 Rep. John Lewis Way N | Nashville, Tennessee 37243-1402  
P: 615.401.7773 | F: 615.532.5279

This map is provided as a public service and is for informational purposes only. It is not an endorsement or approval by the Comptroller of the Treasury of any district boundaries or county lines contained herein.

Precincts may change after the publication of this map. Contact the Division of Property Assessments at 615.401.7773 or visit [apps.cot.tn.gov/dpamaps/redistrict/counties](http://apps.cot.tn.gov/dpamaps/redistrict/counties) for current information.

Created on: 11/20/2023

